

MERCANTILE - 1 PER THREE HUNDRED SQUARE FT. = 27
TOTAL PARKING REQUIRED = 27 SPACES INCLUDING
2 HANDICAP ACCESSIBLE. TOTAL PROVIDED = 45

NOTE:
ALL CONCRETE PAVEMENT SHALL BE
5" THICK CONCRETE EXCEPT FROM
PROPERTY LINE TO STREET SHALL BE 6"
THICK CONCRETE.

1. ROOFING MATERIAL: METAL ROOFING PANEL
2. SIDING MATERIAL: STUCCO & ALUM STOREFRONT
3. UTILITIES: ALL UTILITIES SHALL BE PLACED UNDERGROUND

NOTE:
SIGNAGE SHALL COMPLY
WITH SIGNAGE GUIDELINES

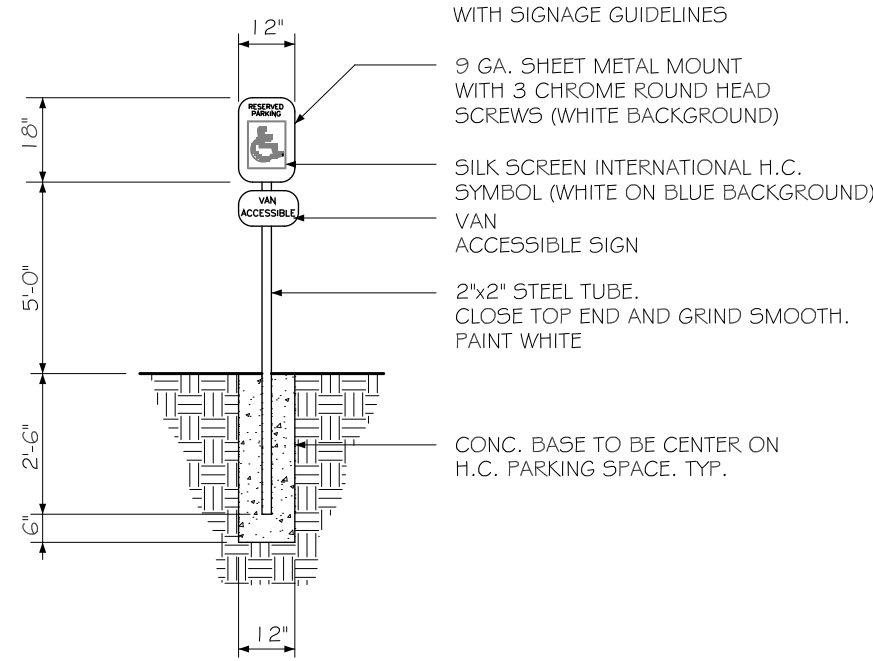
- 9 GA. SHEET METAL MOUNT WITH 3 CHROME ROUND HEAD SCREWS (WHITE BACKGROUND)

- SILK SCREEN INTERNATIONAL H.C.
SYMBOL (WHITE ON BLUE BACKGROUND)
- VAN

ACCESSIBLE SIGN

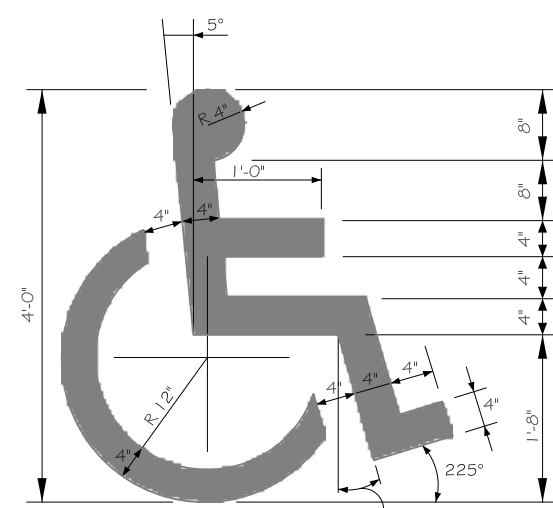
CLOSE TOP END AND GRIND SMOOTH
PAINT WHITE

- CONC. BASE TO BE CENTER ON H.C. PARKING SPACE, TYP.



HANDICAP PARKING SIGN

N. T. S.

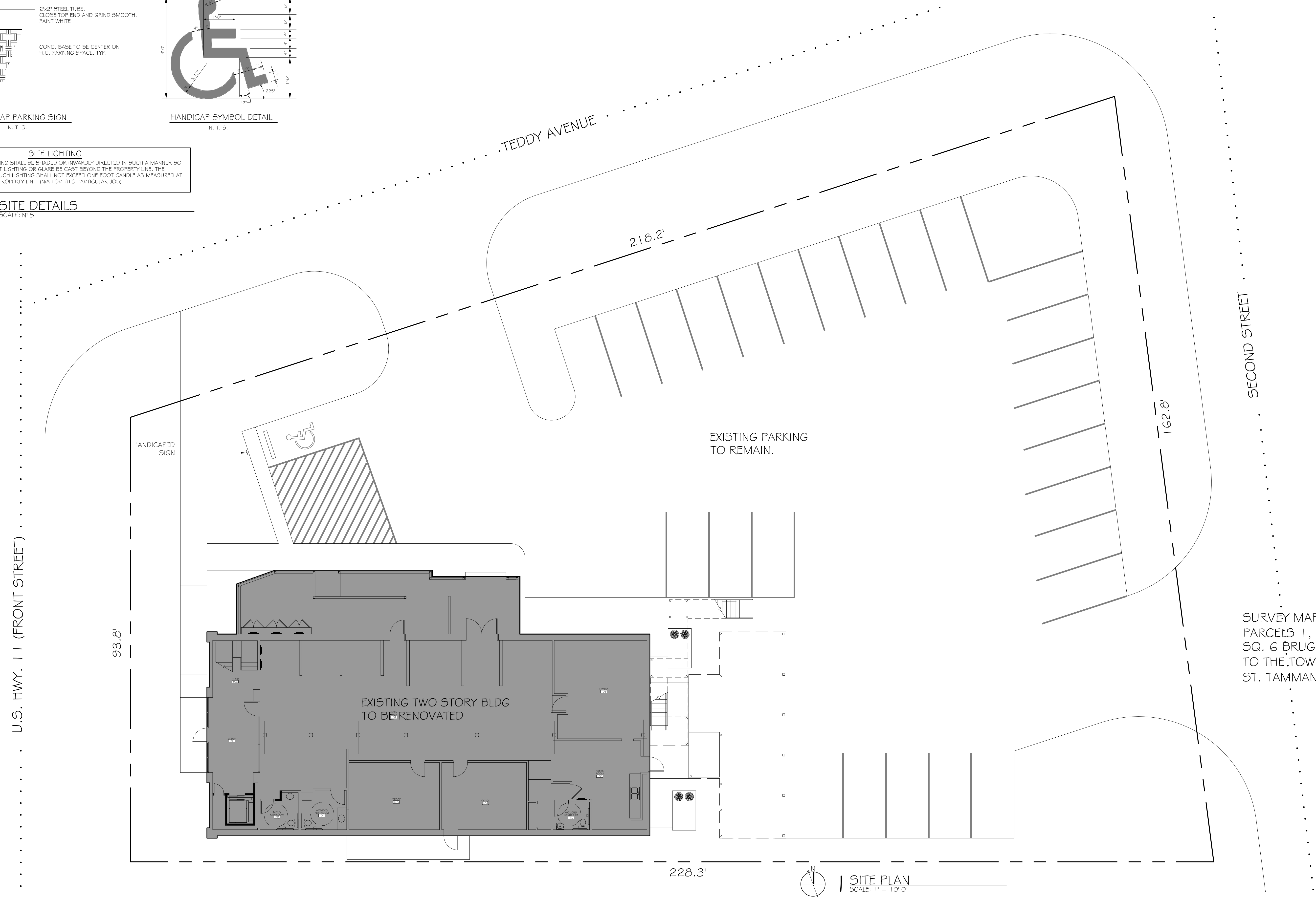


HANDICAP SYMBOL DETAIL

N. T. S.

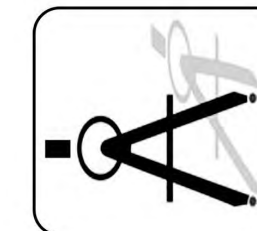
EXTERIOR LIGHTING SHALL BE SHADED OR INWARDLY DIRECTED IN SUCH A MANNER SO THAT NO DIRECT LIGHTING OR GLARE BE CAST BEYOND THE PROPERTY LINE. THE INTENSITY OF SUCH LIGHTING SHALL NOT EXCEED ONE FOOT CANDLE AS MEASURED AT THE ABUTTING PROPERTY LINE. (N/A FOR THIS PARTICULAR JOB)

SCALE: NTS



SURVEY MAP OF
PARCELS 1, 2, 3 AND 4
SQ. 6 BRUGIER ADDN.
TO THE TOWN OF SLIDELL
ST. TAMMANY PARISH, LA.

DAMMON
ENGINEERING, INC.
Architects & Engineers



NEW OFFICES FOR:
EAST ST. TAMMANY CHAMBER

3

DATE: 10-14-201

4

JOB No: 218

3

DATE: 10-14-201

4

JOB No: 218

neers
dammonengineering.com
dammoneng@bellsouth.net
PHONE: 985-649-5833
FAX: 985-641-5995

CHIEF ENGINEER: EMMETT DAMMON, P.E.
CHIEF ARCHITECT: KEVIN KINCHEN, NCARB
554 OLD SPANISH TRAIL
SLIDELL, LA 70458